

REDUCTION OF THE ECONOMIC–FINANCIAL EXPOSURE OF THE STATE AND PROTECTION OF HUMAN LIVES

MODELS FOR THE PREVENTION AND MITIGATION OF DAMAGES TO PEOPLE AND
PROPERTIES THROUGH AN INSURANCE COVERAGE

PRESENTATION

NAME EXPERT: Papadimitriou Eleftheria

REFERENCE INSTITUTE: Geophysics Department, Aristotle University of Thessaloniki

3/14/2014

Info-day, Rome 13.03.2014

Introducing Geophysics Department

2

- Belongs to School of Geology, Faculty of Exact Sciences, Aristotle University of Thessaloniki
- Maintains 40 seismological stations – member of the Hellenic Unified Seismological Network – routine analysis 24h/day, 7d/w
- Staff: 14 professors at 4 levels, 15 members of technical staff with 8 of them Drs of Seismology
- Teaching: 15 courses in School of Geology, Physics and Mathematics

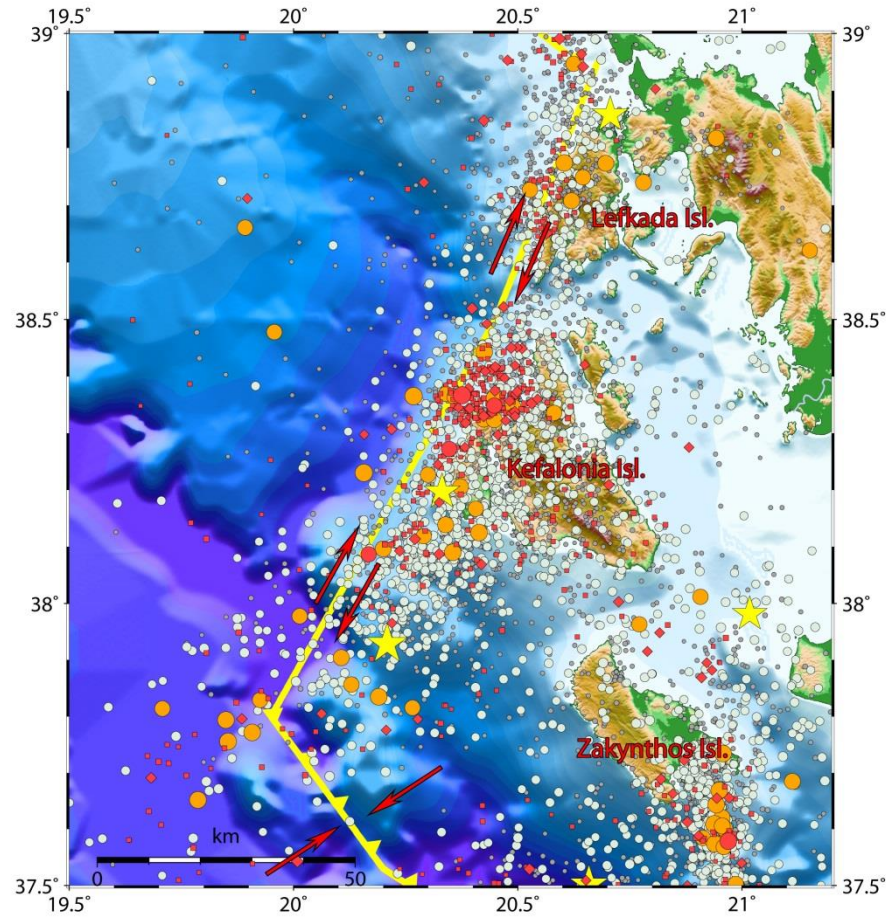
Introducing myself

3

- Degree of Geology
- PhD of Seismology
- Member of Geophysics Department since 1983 – Full Professor since 2001
- Publications: >150
- References: >1000
- Scopus results: publ.:85, h-i.:14 (excl. all authors citations)
- Source parameters, seismotectonics, stress field, seismic hazard

Central Ionian Islands area

4



3/14/2014

2003 Lefkada seismic sequence

5

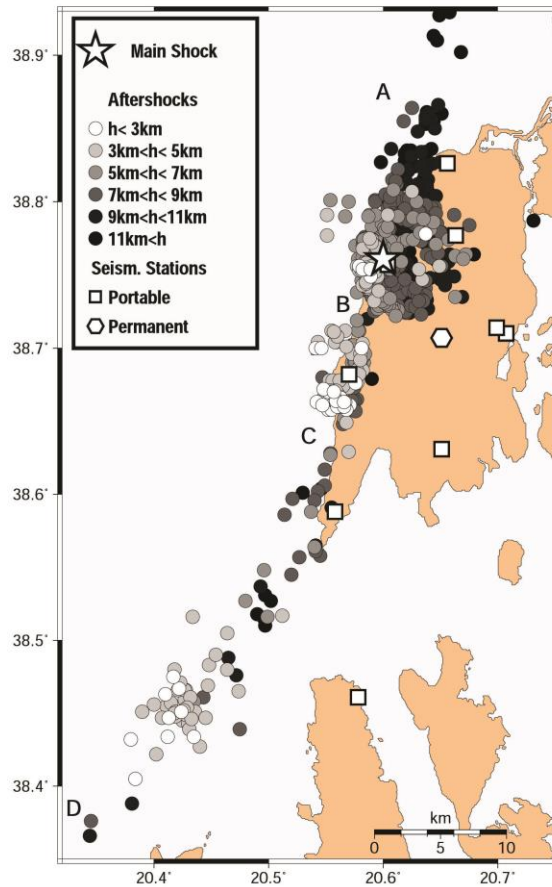


Fig. 2

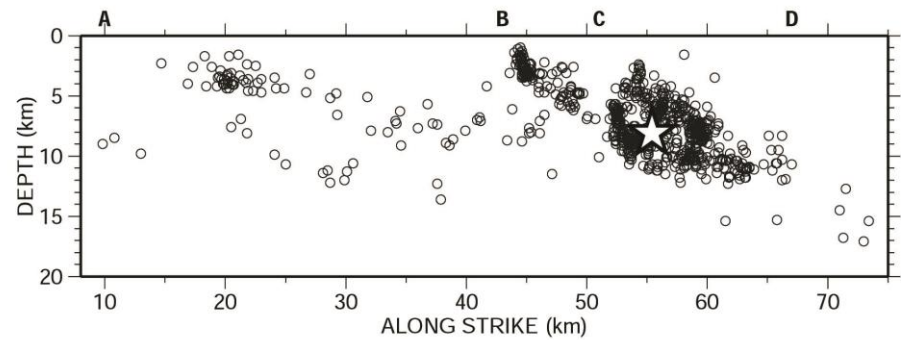


Fig. 3

3/14/2014

Stress transfer – Seismicity triggering

6

Seismicity was triggered to one dimension mainly – evidencing the preference to the faulting type

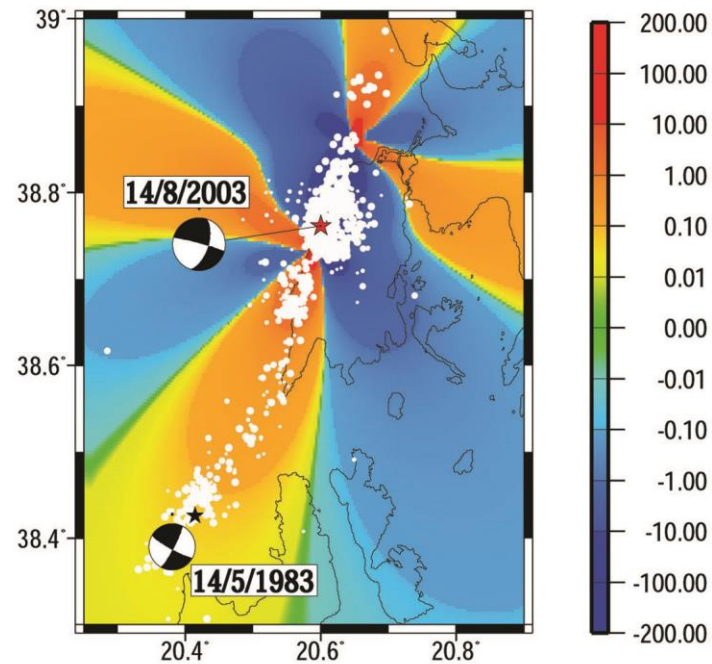


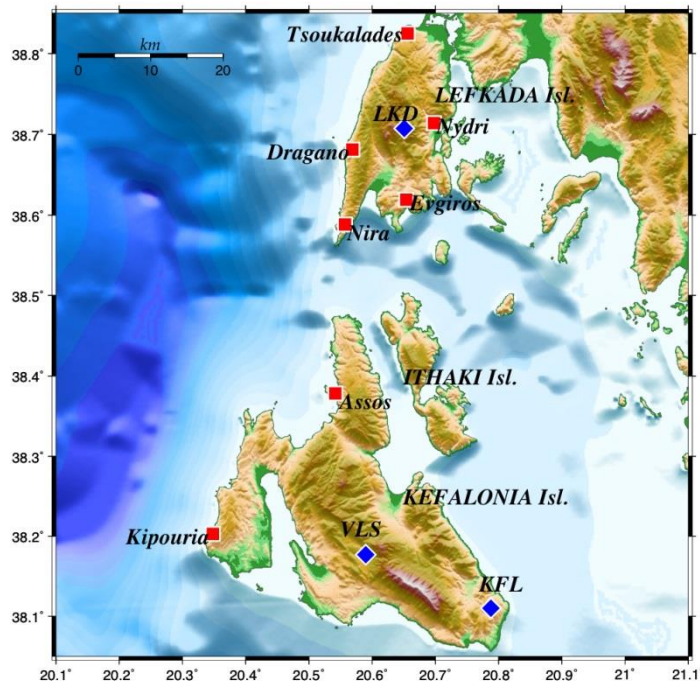
Fig. 6

3/14/2014

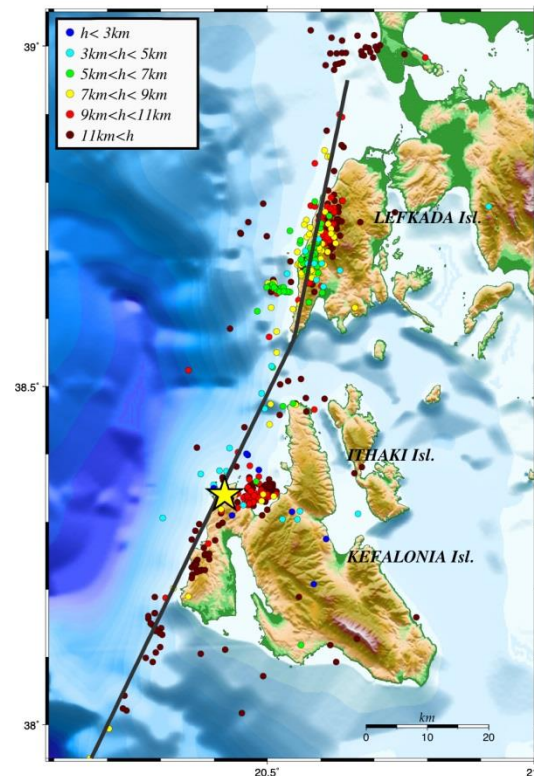
Deployment of a local network

7

Local network in Lefkada & Kefalonia Islands



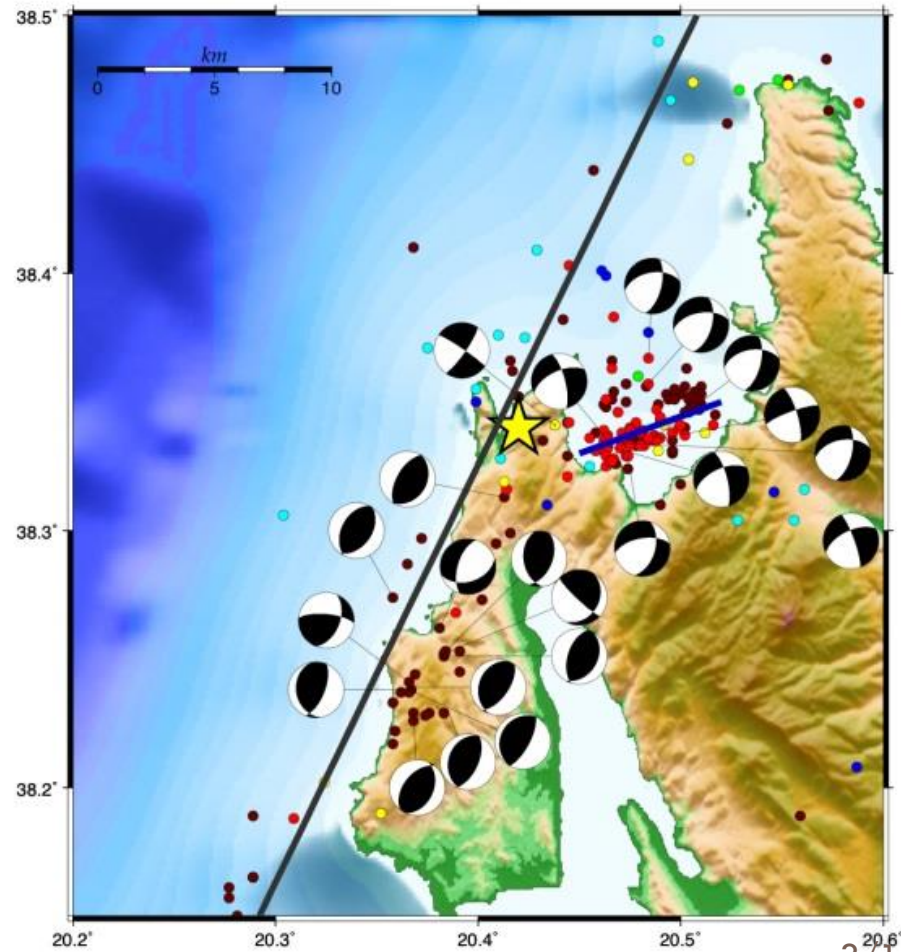
Relocated seismicity (location accuracy criteria)



3/14/2014

Identification of geometry and kinematics of activated segments

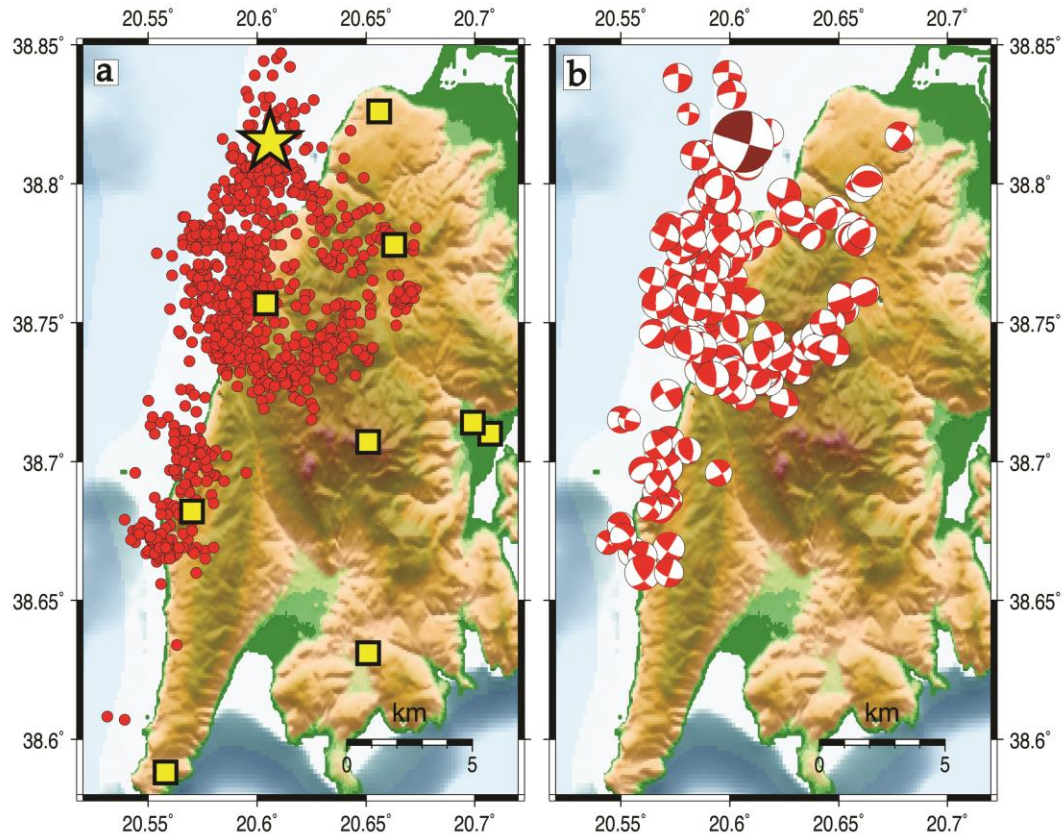
8



3/14/2014

Detailed microseismicity study

9

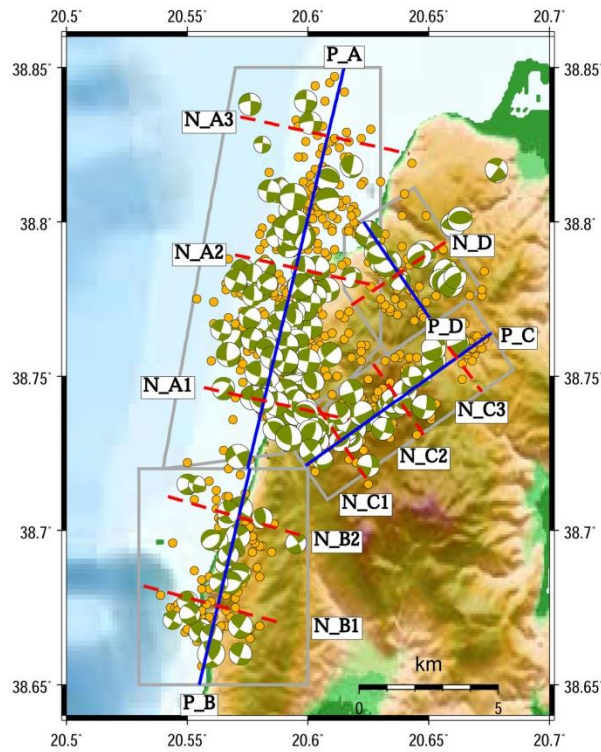


3/14/2014

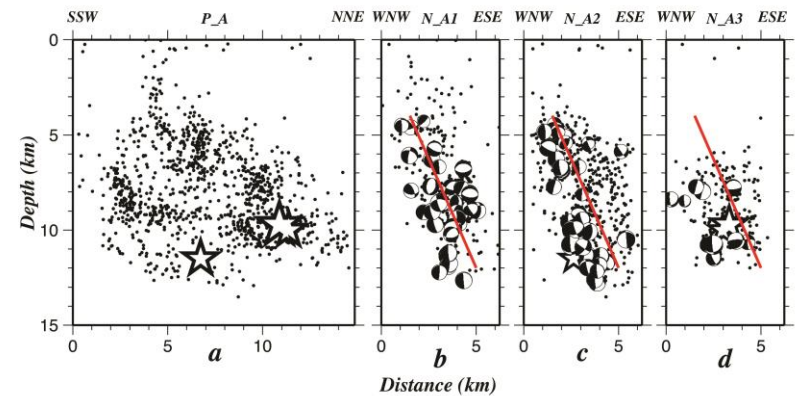
Identification of fault network – properties

10

Seismicity along with fault plane solutions



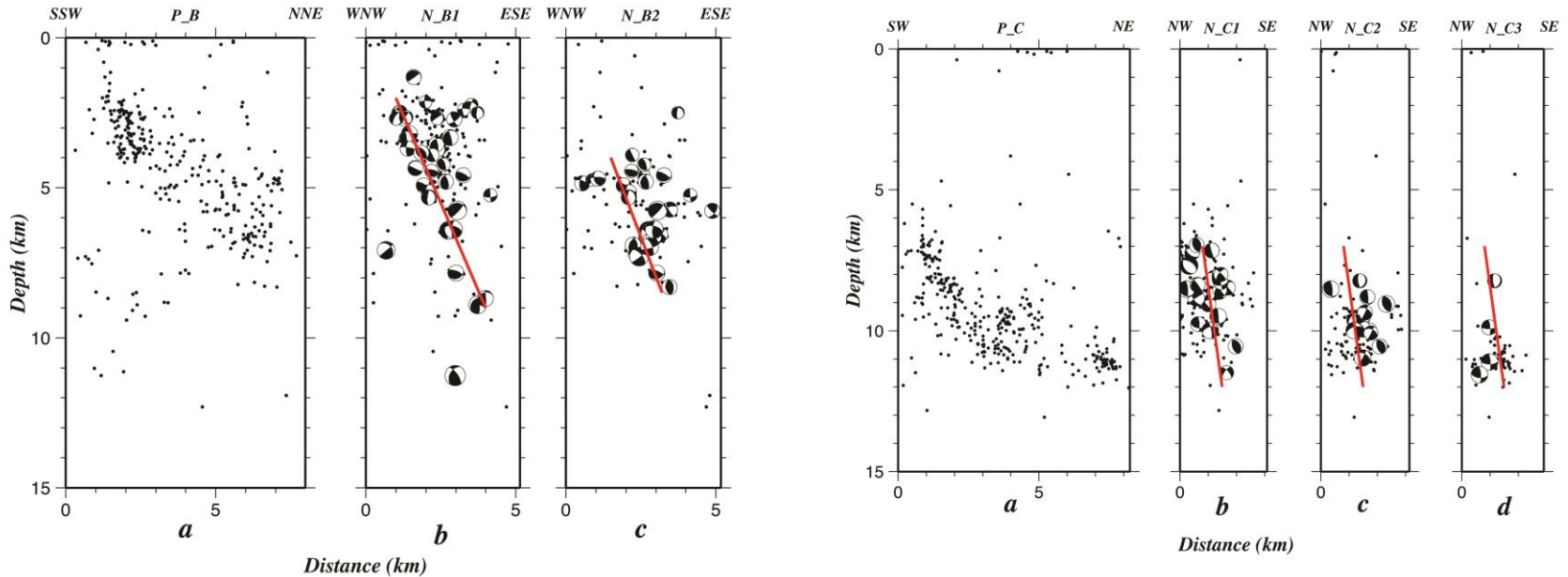
Cross sections perpendicular to the strike of the major rupture



3/14/2014

Identification of fault network – properties

11

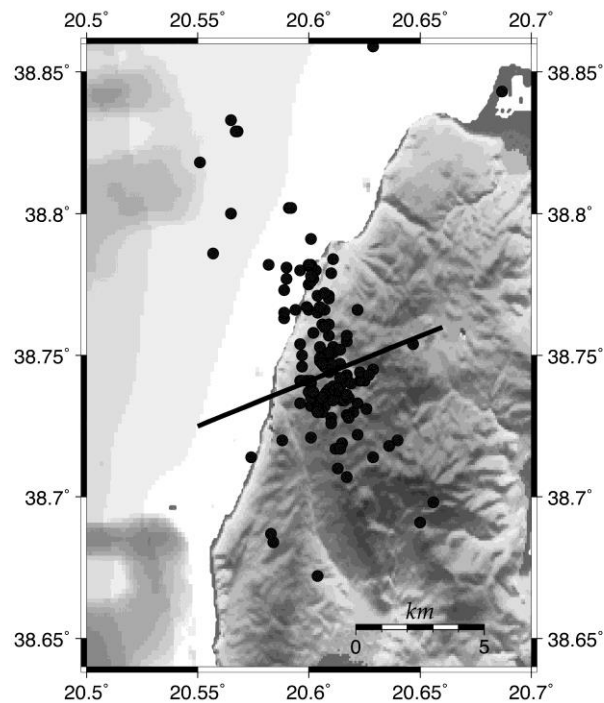


3/14/2014

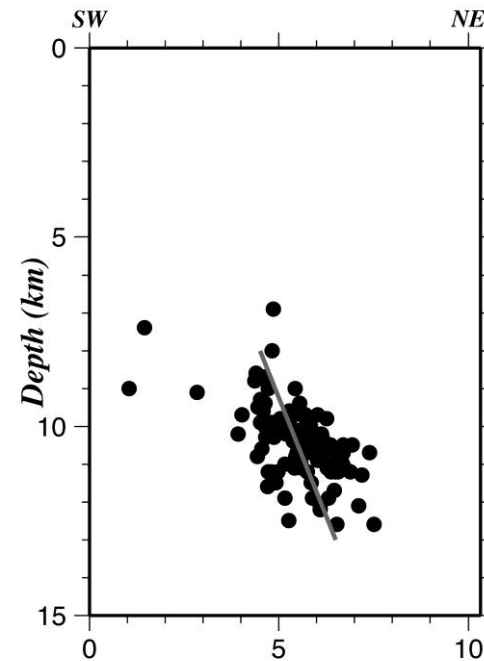
Identification of fault network – properties

12

1994 swarm – epicentral
distribution



Strike normal cross section

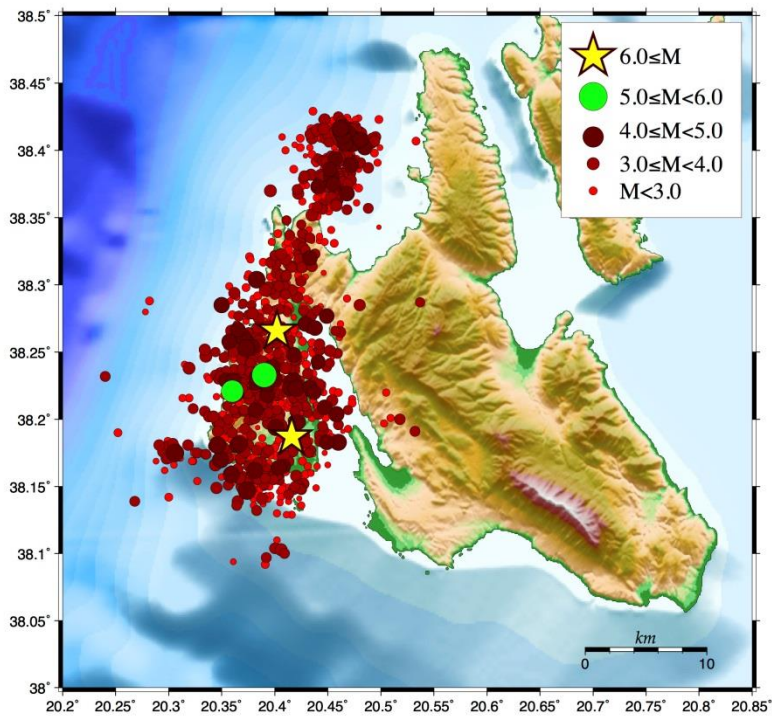


3/14/2014

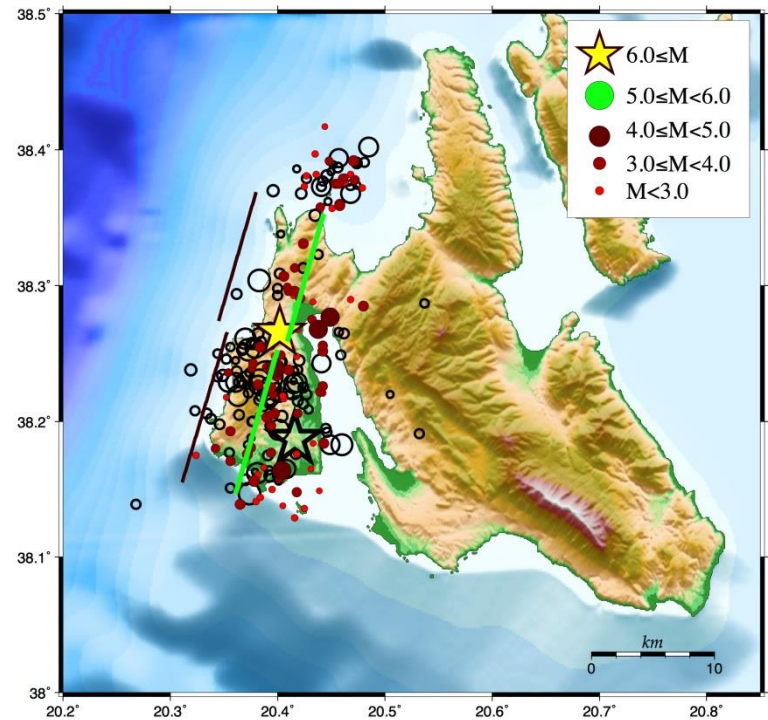
2014 Kefalonia seismic sequence

13

Aftershock distribution



Definition of the major activated segments



3/14/2014

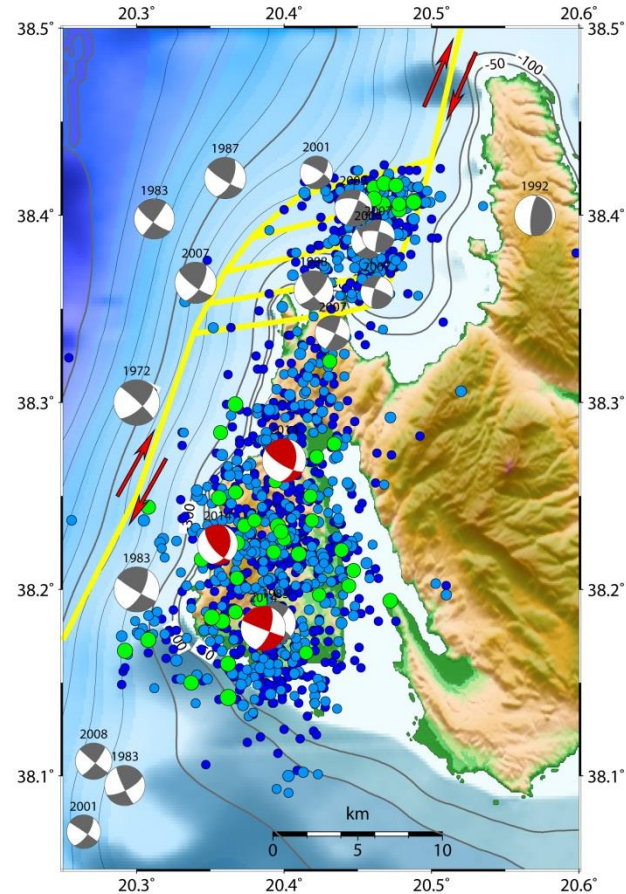
2014 Kefalonia seismic sequence

14

Definition of geometry and kinematics of the active boundary

Significance for rupture extent

Maximum expected magnitude earthquake

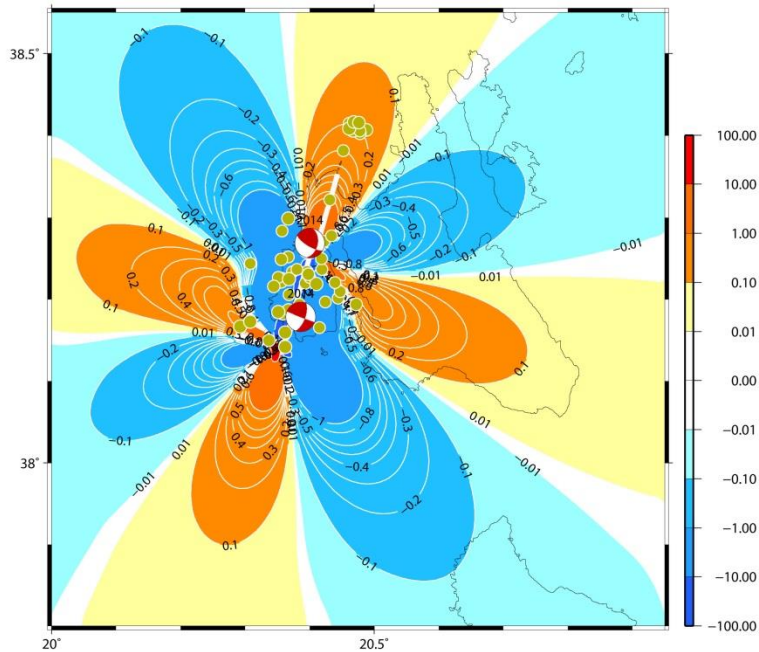


3/14/2014

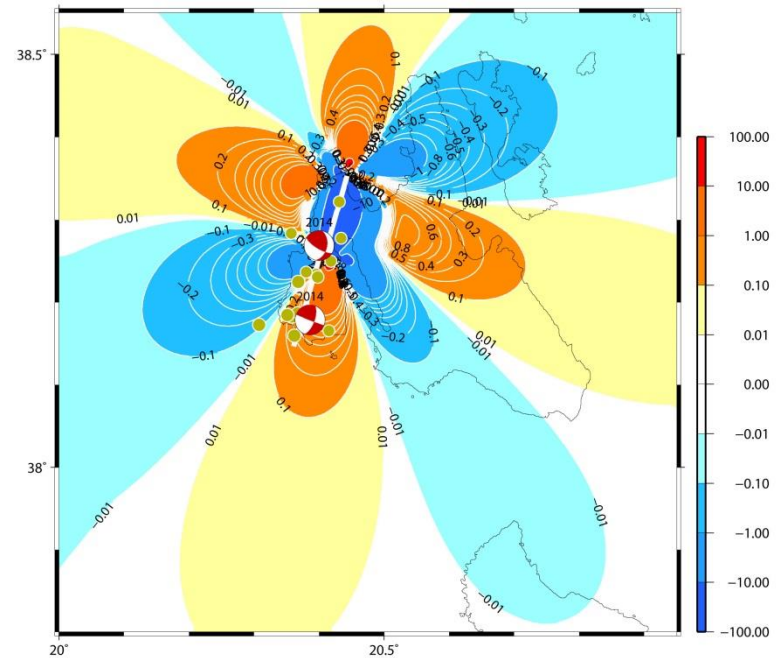
2014 Kefalonia seismic sequence

15

Static stress changes after the
1st main shock (26/1/2014)



Static stress changes after the
2nd main shock (3/2/2014)



3/14/2014

Added value: Input for seismic risk mitigation

16

- Identification of active structures
- Definition of their geometry and kinematics
- Definition of their seismic potential
- Description of fault network
- Definition of rupture extent – maximum expected magnitude earthquake
- Multiple segments activation – expected triggering
- Multisegmented ruptures

Thank you for your attention